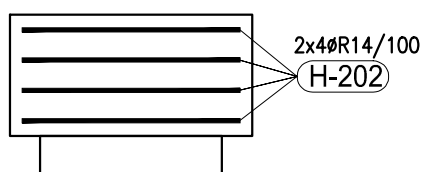


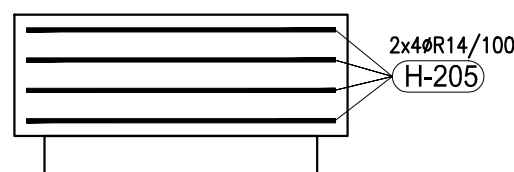
**PŮDORYS - SPODNÍ VÝZTUŽ**  
m 1:25

**PŮDORYS - HORNÍ VÝZTUŽ**  
m 1:25

POHLED - VODOROVNÁ VÝZTUŽ  
m 1:25

[illegible]

POHLED - VODOROVNÁ VÝZTUŽ  
m 1:25

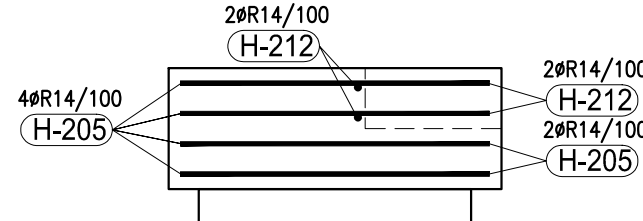


**PŮDORYS - SPODNÍ VÝZTUŽ**  
m 1:25

**PŮDORYS - HORNÍ VÝZTUŽ**  
m 1:25

**POHLED - VODOROVNÁ VÝZTUŽ**  
m 1:25

POHLED - VODOROVNÁ VÝZTUŽ  
m 1:25



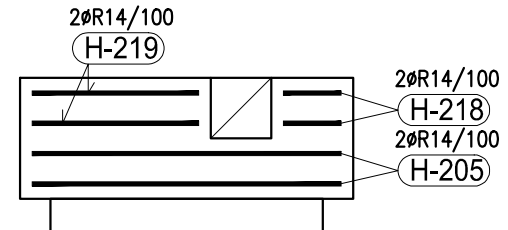
PŮDORYS - SPODNÍ VÝZTUŽ  
 m 1:25

2R14/150  
 H-213  
 2R14/150  
 H-214  
 4R14/150  
 H-214  
 36R14/150  
 H-203  
 46R14/150  
 H-214  
 H-214  
 H-214

PŮDORYS - HORNÍ VÝZTUŽ  
 m 1:25

2R14/150  
 H-204  
 2R14/150  
 H-215  
 4R14/150  
 H-216  
 36R14/150  
 H-204  
 46R14/150  
 H-217  
 46R14/150

POHLED - VODOROVNÁ VÝZTUŽ  
m 1:25



**PŮDORYS - SPODNÍ VÝZTUŽ**  
m 1:25

3R14/150 (H-226)

4R14/150 (H-203)

(H-223) 4R14/150

4R14/150 (H-222)

4R14/150 (H-203)

4R14/150 (H-225)

4R14/150 (H-224)

4R14/150 (H-223)

4R14/150 (H-203)

4R14/150 (H-203)

**PŮDORYS - HORNÍ VÝZTUŽ**  
m 1:25

3R14/150 (H-226)

4R14/150 (H-204)

(H-226) 4R14/150

4R14/150 (H-227)

4R14/150 (H-204)

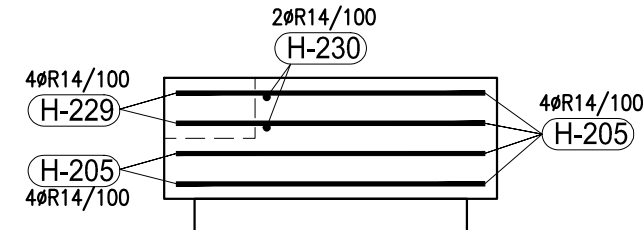
4R14/150 (H-225)

4R14/150 (H-224)

4R14/150 (H-203)

4R14/150 (H-204)

POHLED - VODOROVNÁ VÝZTUŽ  
m 1:25



**PŮDORYS**  
m 1:25

Technical drawing showing the top view (PŮDORYS) of the table. It is a square with a side length of 800 mm. A dashed circle inside the square represents the top of the round table, with a diameter of 600 mm.

**POHLED**  
m 1:25

Technical drawing showing the side view (POHLED) of the table. It is a rectangle with a height of 400 mm. The table is supported by two legs, each with a width of 100 mm. The distance between the inner edges of the legs is 600 mm.

**PODORYS**  
m 1:25

The plan view shows a rectangular area with overall dimensions of 1100 mm by 1100 mm. It features a large circular hole with a diameter of 650 mm. To the right of the circle's center, there is a smaller rectangular cutout measuring 450 mm in width and 150 mm in height. The distance from the right edge of the main rectangle to the left edge of this cutout is 275 mm. The total height of the rectangle is divided into three vertical sections: 675 mm at the top, 150 mm for the cutout, and 275 mm at the bottom. Section lines A-A are indicated at the bottom corners.

**POHLED A-A**  
m 1:25

The elevation view shows the profile of the object. It has a total width of 900 mm and a total height of 400 mm. The base consists of two 100 mm wide supports separated by a 900 mm gap. The top surface is flat at 200 mm height, except for a rectangular notch on the right side that is 200 mm deep and 200 mm wide. Dashed lines indicate the internal structure or hidden edges.

**PUDORYS**  
m 1:25

675  
1100  
425  
630  
200  
270  
1100  
DRAŽKA 425x200 mm,  
HL. 200 mm

**POHLED B-B**  
m 1:25

200  
200  
400  
900  
100  
100  
DRAŽKA 425x200 mm,  
HL. 200 mm

PŮDORYS  
m 1:25

1100

475

300

800

200

425

1100

DŘÁŽKA 300x200 mm,  
HL. 200 mm

C

SOUŘADNICOVÝ SYSTÉM S-JTSK  
VÝŠKOVÝ SYSTÉM Bpv ±0,000=238,07

[illegible]